

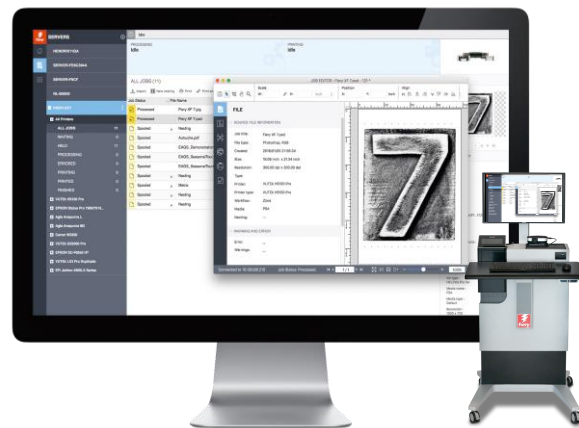
# What's new?

## Fiery proServer and Fiery XF 7.3



# Contents

- New features
  - Connection
  - Productivity
  - Color & Imaging
- New product configurations and offerings
- Technical information
- Resources





**CONNECTION**

*Hundreds of new supported printers*



# Expanded printer support



- Fiery® XF 7.3 brings support for more than 180 additional printers from 20 different vendors including: Agfa, d.gen, Durst, EPSON®, Mimaki, Mutoh, Roland DG, and Teckwin
- Over 1,200+ drivers out-of-the-box



[Fiery XF 7.3 supported printers](#)

# Expanded printer support



- An additional 400+ printer drivers from 136 different printer vendors are now available on request



[Fieri XF 7.3 supported printers](#)



**COLOR & IMAGING**

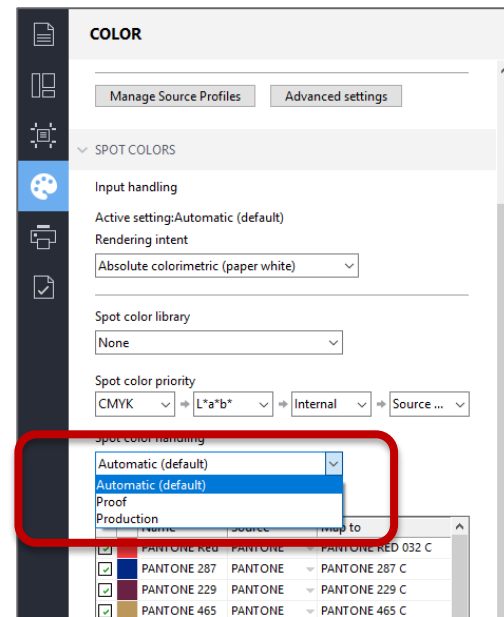
*Faster, better color*



# Faster spot color processing

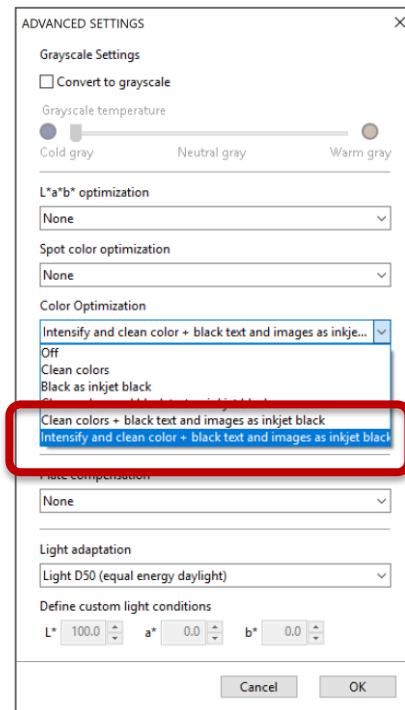


- A new “speed mode” processes spot color jobs up to 50% faster
- 3 selectable modes:
  - Proof
    - The highest quality mode
  - Production
    - The fastest mode
  - Automatic (default)
    - Dynamically chooses between the Proof or Production mode based on certain spot color settings



# New Clean colors mode

- An additional Clean colors mode boosts results
- “Intensify and clean color + black text and images as inkjet black” mode:
  - Increases the intensity of the cleaned colors
  - Produces more vivid output
  - Suitable for vector and technical-style job content

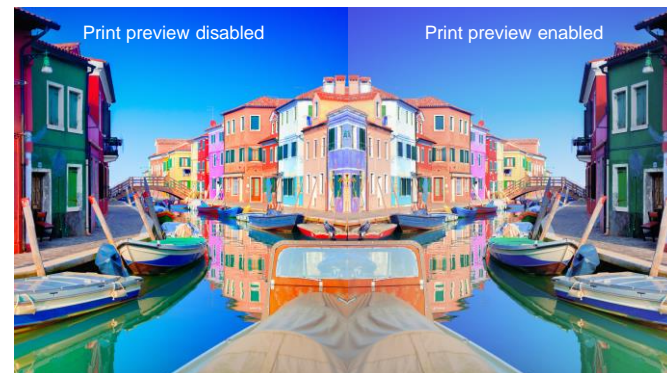
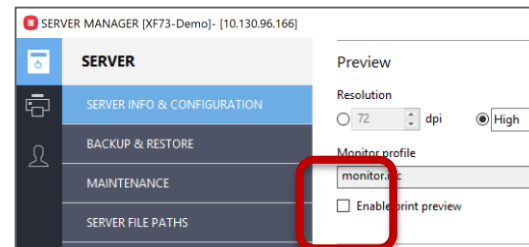




# More accurate print previews



- More realistic print previews
- Preview generation using the printer gamut
  - Using the output profile gamut allows for a more realistic preview especially with small gamut printers



# PrintWide2020 ICC profile support



- Better use of the color space of wide gamut printers
  - Use the PrintWide2020 ICC as a reference profile for production jobs printed on wide gamut printers



# Expanded Advanced Linearization support



- Color and quality gains with the latest linearization technology for more users
- EFI™ Advanced Linearization is now available for more non-EFI printers\*



# Advanced Linearization benefits



- EFI Advanced Linearization brings:
  - Data smoothing (linearization curves are smoother)
  - 12-bit linearization curves instead of 8 bit (CMYK only)
  - 10-bit linearization curves instead of 8 bit (CMYK + light inks)
  - Delta E linearization instead of  $L^*/b^*$  (only for CMYK but not light inks)
  - Ink Limit per channel and linearization steps are combined in one step
  - Linearization/compensation curves visible in the UI to adjust curves as needed
  - Control of light/norm curves including light ink end point
  - Ink saving by variable light ink end point definition lower than 100% for printers with light inks
  - Visual reference chart to check the settings/quality of the linearization visually
  - Enhanced TIL chart and algorithm for highest accuracy on absolute TIL value



**PRODUCTIVITY**

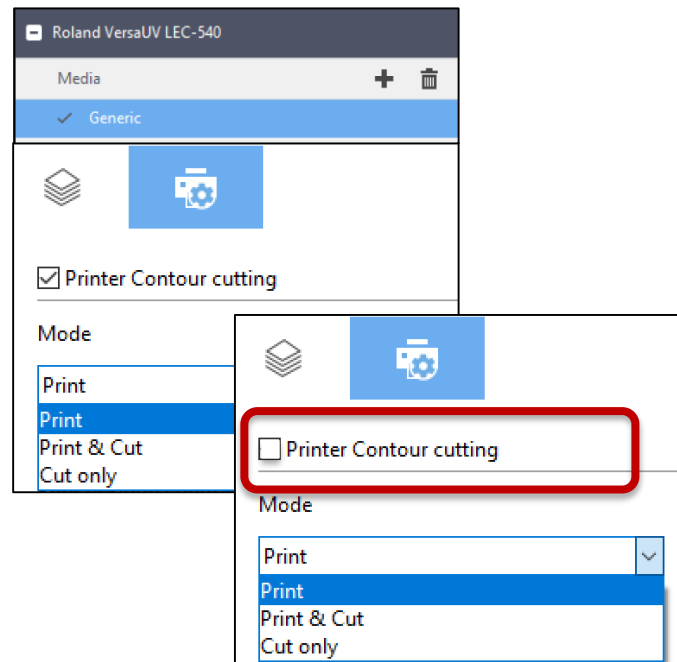
*More ways to print and cut*



# Enhanced Print & Cut device support



- Maximized use of cutting equipment
- External cutters can now be used in conjunction with Print & Cut devices
- Available for all supported Print & Cut models



# QR code support

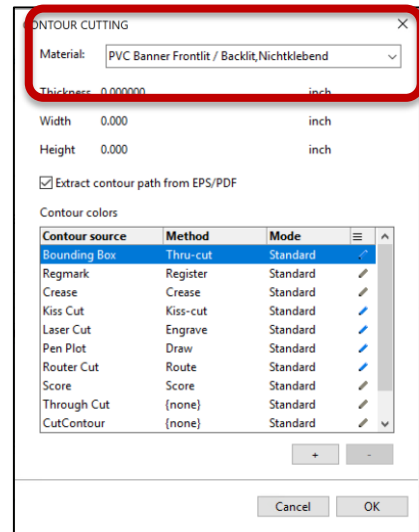
- Faster cutting with QR code support available for use with:
  - Zund (D3, G3, L3 and S3), Esko Kongsberg, iCut, EuroSystems OptiScout v8, MATIC
- 3 positions definable
  - Top, Bottom, Top And Bottom
- Requires Cut Marks Option



# Zünd cutter material database support



- Enhanced connection to Zünd's ZCC Server and load cutter material information
  - Fiery Cutter Material Data Base Connector in Fiery Server Control connects to Zünd ZCC Server on windows PC driving the Zünd cutter
- Loaded materials are available in the Contour Cutting dialog box

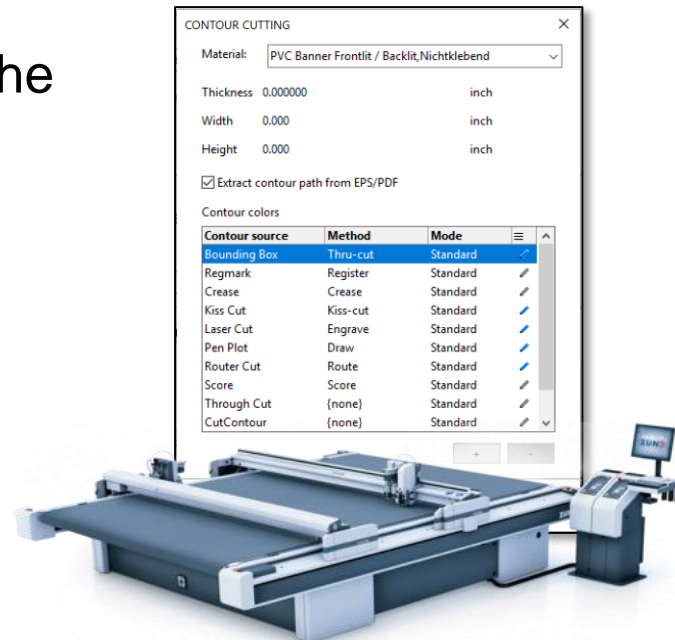




# Zünd cutter material database support



- Cut jobs are immediately ready to cut at the Zünd cutter
  - No manual assignment of media settings at the Zünd cutting software needed
- Highly productive Print & Cut workflow together with QR code support
  - Read out bar code with camera integrated with cutter to identify job at Zünd cutting software
  - Start immediate cutting of print job on Zünd cutter



# New product configurations & offerings



# Two new Fiery XF product offerings

## Fiery XF Proofing

- Fiery XF Server
- Fiery Command WorkStation (10 concurrent connections)
- Color Profiler Option
- **Color Verifier Option**
- No Printer Option included (needs to be ordered with at least 1 Printer Option)
- 1 YR SMSA

## Fiery XF Production

- Fiery XF Server
- Fiery Command WorkStation (10 concurrent connections)
- Color Profiler Option
- **Cut Marks Option**
- No Printer Option included (needs to be ordered with at least 1 Printer Option)
- 1 YR SMSA



# New printer driver license model

- For a better RIP-to-printer price ratio, six new Printer Options replace the previous “size-based” Printer Options
- Six groups now exist, Group 2 to Group 7
- All supported printers are assigned to one of these new groups

# New printer driver license model

- To check on supported models and printer groups visit [efi.com/FieryXF/Printers](http://efi.com/FieryXF/Printers)

Supported Printers

Select your printer brand : EPSON

Select your printer model : SureColor SC-R50X0 CMYK Contone

Supported since Fiery XF version	Required Printer Option for Fiery XF 7.3 or higher	Fiery Ink Saving Support	Printer Driver Supplements
7.2.3	Printer Option Group 6	No	<a href="#">View</a>

# Version 7.3 configurations and options

## Product Configuration

**Fiery XF 7.3 Proofing**  
& 1-YR SMSA

**Fiery XF 7.3 Production**  
& 1-YR SMSA

## Printer Option Groups

**1 Required**  
Additional optional

**Printer Option Group 2**

**Printer Option Group 3**

**Printer Option Group 4**

**Printer Option Group 5**

**Printer Option Group 6**

**Printer Option Group 7**

## Product Options

Optional only

**Color Verifier Option**

Already incl. in Proofing configuration

**Cut Marks Option**

Already incl. in Production configuration

**Cut Server Option**

**Ink Saving Option**

For non-EFI printers



# Fiery proServer Premium 7.3 performance

- The new Fiery proServer Premium version 7.3 prints jobs an average of 30% faster versus Fiery proServer version 7.2



# New Fiery proServer Premium 7.3 specification

- CPU
  - 1 x INTEL CORE I7-8700, 6 cores, 12 threads,
  - 3.20 GHz (Turbo 4.6 GHz)
- GPU
  - NVIDIA GeForce RTX 3060, 12 GB GDDR5
- RAM
  - 64 MB (2 x 32)
- Hard drive
  - 2 x 960 GB SSD, SATA III
  - 1 x 240/256 GB SSD, SATA III





# Fiery proServer Premium 7.3 configuration

- 3 FAST RIP instances instead of 2
- Available in two configurations:
  - With 1 GB network card
  - With 10 GB network card
    - For VUTEk® XT and MCORR 1300 only



 **FAST RIP**

x3



# Technical information



# Updated printer drivers

- EFI Pro 16h and Pro 24f
  - Added "PROGRAPHICS UV XA XF" ink support
- EFI VUTEk Q3r/Q5r [FAST DRIVE]
  - Removed print modes:
    - 4C-WU-Q / 4C-WU-Coat-Matte-Q / 4C-CWC-B-Q /  
4C-CWC-B-C1-Q / 4C-CWC-B-C2-Q
  - Added print modes:
    - 4C-Backlit-Q / White-Under-Q / CWC-B-Q /  
CWC-B-C1-Q /  
CWC-B-C2-Q / White-Only-Q
- Added print modes:
  - White-Under-Coat-Matte-Q / 7C-8Pass-Q /  
7C-6Pass-Q /  
7C-12Pass-Q / 7C-Backlit-Q / 7C-WO-Q
  - 7C-White-Under-Q / 7C-CWC-Q / 7C-  
CWBWC-C1-Q /  
7C-CWBWC-C2-Q / 7C-CWC-C1-Q
  - 7C-CWC-C2-Q / 7C-CWC-B-Q / 7C-CWC-  
B-C1-Q /  
7C-CWC-B-C2-Q / 7C-WU-Coat-Gloss-Q
  - 7C-White-Under-Coat-Matte-Q / 7C-Coat-  
Matte-Q /  
7C-Coat-Gloss-Q

# Fiery XF 7.3 required software versions

- Fiery XF Server 7.3
- Fiery Command WorkStation Package 6.7.0.196 SP1 or higher
- Fiery Color Profiler Suite 5.3.3.18 or higher

# Supported Operating Systems

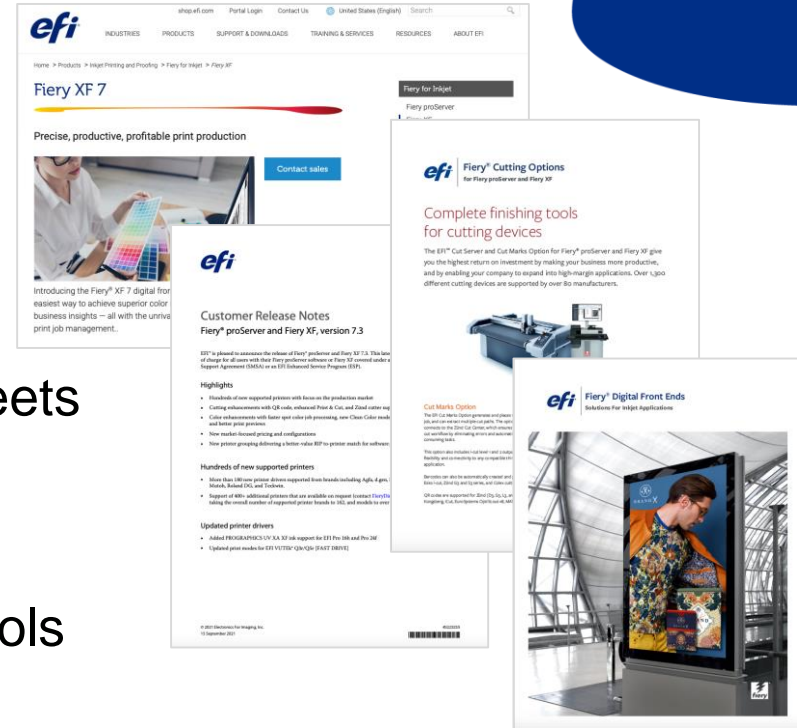
- Fieri XF Server
  - Microsoft Windows 10
  - Microsoft Windows 2016 Server (64-bit)
  - Microsoft Windows 2019 Server (64-bit)
- Fieri Command WorkStation and Fieri Color Profiler Suite
  - Microsoft Windows 10
  - Microsoft Windows 2016 Server (64-bit)
  - Microsoft Windows 2019 Server (64-bit)
  - macOS 10.14, 10.15, and 11.0
    - Requires Rosetta 2 on Apple M1 Macs

# Resources



# Resources

- [www.efi.com/fieryxf](http://www.efi.com/fieryxf)
  - Updated brochures and datasheets
  - Release notes
  - System matrix
  - Supported printer and cutters tools and PDFs



# Sales resources

- <https://salesportal.efi.com/>
  - What's new presentation
  - Fiery proServer overview presentation
  - Fiery XF overview presentation
  - Product matrix

What's new?  
Fiery proServer and Fiery XF 7.3

Fiery XF 7.3 – Overview

September 2021

*efi*

Fiery proServer 7.3 – Overview

September 2021

*efi*





# Sales resources

- New pricing and price lists
  - Available from your EFI representative or EFI Distributor

EFI Part #	Product	MSRP		
Fiery XF 7.3 Software				
PLEASE NOTE! Digital delivery via email.				
Full Version Licenses & 1 YR Software Maintenance & Support Agreement (SMSA) No Printer Option included. Required to order (minimum) 1 Printer Option license!				
3000014003	Fiery XF 7.3 Proofing License & 1 YR SMSA License configuration: Fiery XF Server (incl. Spot Color support & FAST RIP), 10 Clients, Color Profiler Option, Color Verifier Option	\$2,400	€ 2,300	£1,960
3000014004	Fiery XF 7.3 Production License & 1 YR SMSA License configuration: Fiery XF Server (incl. Spot Color support & FAST RIP), 10 Clients, Color Profiler Option, Cut Marks Option	\$2,000	€ 1,900	£1,620
Printer Option Licenses requires version 7.3				
Click here to search for your printer model and required Printer Option				
3000013975	Printer Option Group 2 License	\$400	€ 400	£340
3000013976	Printer Option Group 3 License	\$600	€ 600	£510
3000013977	Printer Option Group 4 License	\$800	€ 800	£680
3000013978	Printer Option Group 5 License	\$1,000	€ 1,000	£850
3000013979	Printer Option Group 6 License	\$1,200	€ 1,200	£1,020
3000013980	Printer Option Group 7 License	\$2,000	€ 2,000	£1,700

# eLearning resources

- What's new in Fiery XF 7.3 Express Video



Thank you for your time!

