



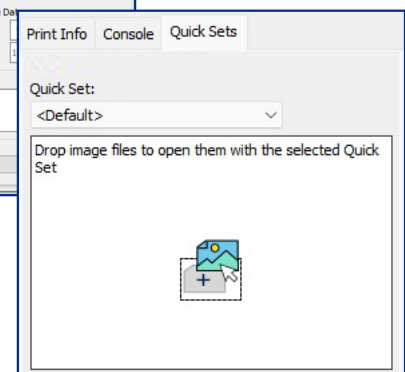
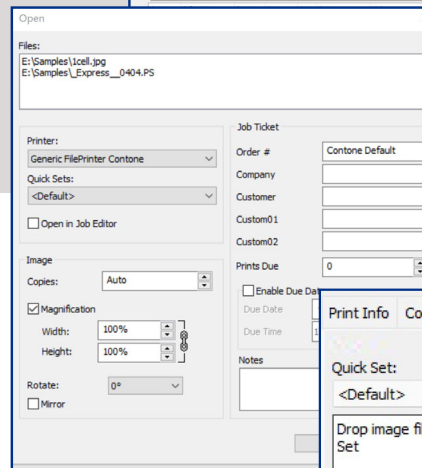
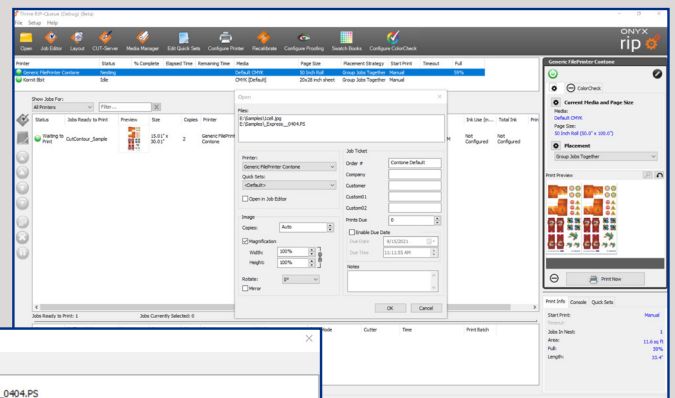
# ONYX 22.5

## Designed for modern print businesses

ONYX 22 introduces a drag-and-drop user experience, with easy-to-use tools for fast, everyday automation.

### A new drag-and-drop user experience simplifies the print production process

- Drag-and-drop files directly to the RIP-Queue
- Drag-and-drop files into new Quick Sets tab to apply common job automation
- Restore archived jobs with drag-and-drop
- Make fast edits in fewer clicks before ripping including: page size, rotation, mirror, or copies
- Add important customer data and job notes that carry through to production
- Reduce manual errors on complex jobs

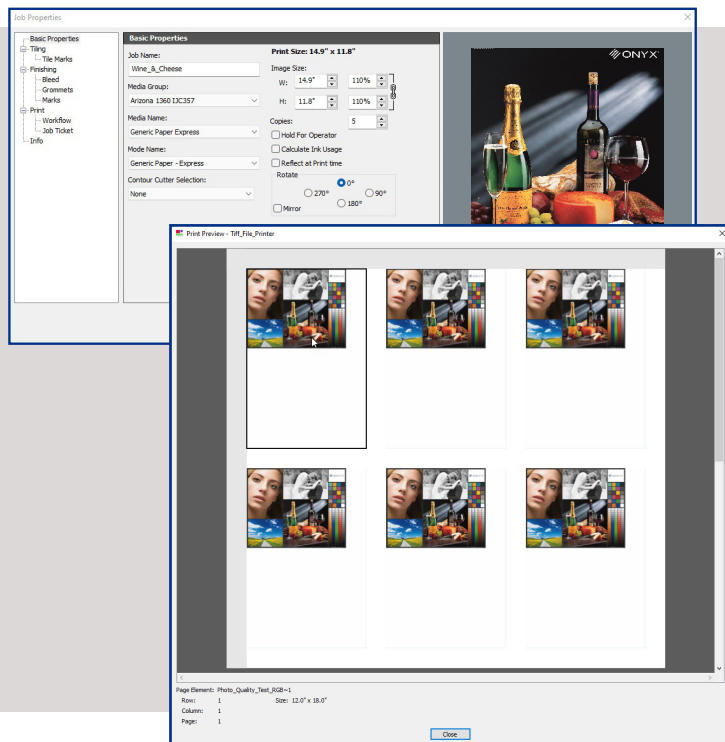
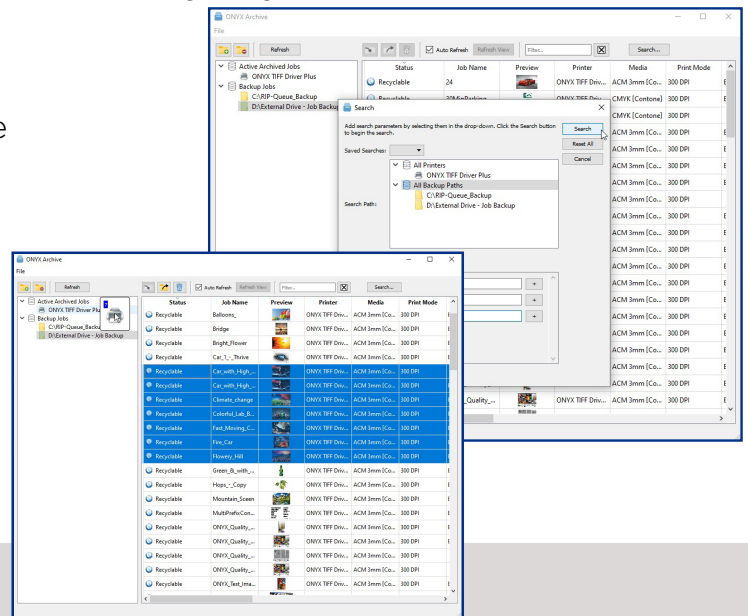


# 22

ONYX

# Easy-to-use tools solve the need for everyday automation

- ONYX Archive saves time and reduces data loss with easy controls to backup, search, or restore print jobs for future use
- Automate job archiving with Quick Sets
- Filename automation ensures prints match customer orders
- Define print settings including: copies, magnification, rotation, order number, company and customer name
- Filename print settings automatically apply in the RIP
- Automated job ticket information reduces manual error







- Enhanced nest management controls for artwork placement
- Auto-trim for flatbed and DTG printing
- Split copies into separate jobs to save on sheet media
- Choose to hold or release jobs on Row or Sheet based on the percentage full
- Automate settings using Quick Sets
- Remove unwanted marks or bleed with auto image cropping
- Check, install, update, or backup printer data directly from printer manager
- Install or update printers from the RIP-Queue
- Intuitive setup and configuration control for XY trimmers

# Intuitive color tools improve output accuracy for any printer

- New ONYX Color Reference Library
- Showcase color output to print buyers
- Easy G7 calibration using ColorCheck
- Snapshot color calibration for contone printers
- D65 10° observer light measurement options for textile printing



# Compare Versions:

				
Full 64-bit platform for entire product portfolio	✓	✓	✓	✓
Multi-roll functionality with job scaling and rotation	✓	✓	✓	✓
Page size and media handling	✓	✓	✓	✓
AccuBoost iterative ICC profiling for accuracy	✓	✓	✓	✓
PosterColor smart saturation rendering intent	✓	✓	✓	✓
iccMAX v5 profiling		✓	✓	✓
DeviceLink+ to match color across devices**		✓	✓	✓
Spark Engine advanced threading pipeline		✓	✓	✓
Nest trim box for weeding cut jobs		✓	✓	✓
Enhanced, Line and Screen stochastic dot patterns		✓	✓	✓
Swatch Books 2.0 visual workflow			✓	✓
PDF tile maps and soft proofs			✓	✓
PDF Soft proofs			✓	✓
Drag-and-drop job submission and Quick Sets				✓
The latest Adobe PDF Print Engine 6.1				✓
Smart job submission using filename				✓
Auto-trim for artwork placement control				✓
Split copies for sheet media				✓
Row and Sheet-based auto print trigger				✓
Auto crop-to-fit for sheet media				✓
Printer versioning and update from RIP-Queue				✓
ONYX Color Reference Library				✓
G7 calibration using ColorCheck*				✓
Auto printer data backup at uninstall				✓
Snapshot calibration for contone printers				✓
D65 10° observer light measurement for textile				✓
ONYX archive to back up, search, and restore jobs				✓

\* available with ONYX Advantage Gold subscription  
\*\*included with Profiling



ONYX  
advantage 

Upgrade today with an ONYX Advantage subscription and save up to 25% on the cost of product updates over 3 years. For more information contact your Authorized ONYX Reseller or visit [onyxfx.com](http://onyxfx.com).

