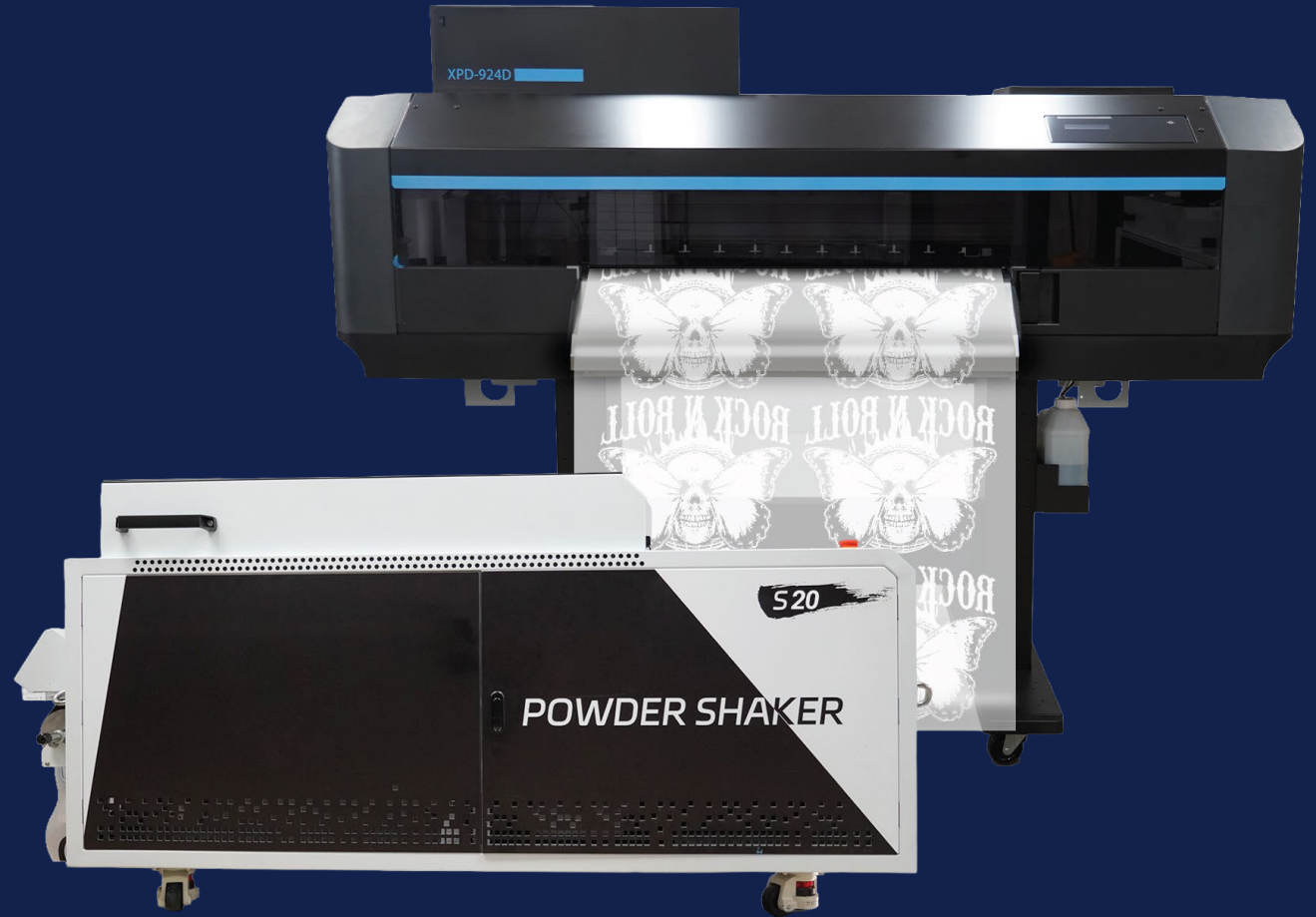


MUTOH

Innovation. Precision. Excellence.

XPD-924D

Direct-To-Film (DTF) Solution



What is DTF Printing?

- **Direct-to-Film (DTF)** prints onto film and transfers to fabric via heat & pressure
- **CMYK + white ink layering** enables opaque prints on light and dark fabrics
- No pre-treatment — works on **cotton, polyester, blends and dark textiles**
- **Water-based inks + hot-melt adhesive powder**
→ vibrant, durable, flexible prints



Target Customer Groups

- Small to medium print shops looking for versatility.
- Custom apparel businesses needing high-quality, durable prints.
- Promotional product suppliers wanting fast turnaround.
- Startups/entrepreneurs entering the textile market.



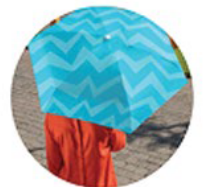
Cotton and Polyester



Denim



Fleece



Nylon

Sales Talking Points

- **Versatility** : "Print on almost any fabric—no restrictions."
- **Quality** : "Vibrant colours and fine details, even on dark materials."
- **Ease of Use**: "No pre-treatment, minimal setup, and small learning curve."
- **ROI**: "Lower waste, faster production, and broader application range."



Common Objections & Responses

- **“Sublimation is cheaper for large batches.”**
 - “True, but DTF offers flexibility for mixed orders and dark fabrics.”
- **“Is DTF durable?”**
 - “Yes, prints last 50+ washes with proper care.”
- **“What’s the learning curve?”**
 - “The learning curve is moderate. The basic workflow is very straightforward. Achieving stable, repeatable production will involve to spend some time on optimising parameters such as ink laydown, powder application, curing and pressing conditions.”



XPD-924D DTF Printer – Throughput indication

Typical 2-Layer production speeds : CMYK + White Overlay

Throughput	Effect	CR	PF	CR Speed
6,9 m ² /h	i-Screen Fast	900	1200	460
10,4 m ² /h	i-Screen Fast	600	1200	460
12,9 m ² /h	i-Screen Fast	900	600	460

DTF Substrate Compatibility – Typical Applications

Substrate	Suitability for DTF	Adhesion Mechanism	Durability	Typical Use Case
Cotton	★ ★ ★ ★ ★ (Ideal)	Fibre bonding	★ ★ ★ ★ ★	T-shirts, hoodies
Polyester (PES)	★ ★ ★ ★ ★ (Ideal)	Fibre bonding	★ ★ ★ ★ ★	Sportswear
Blends (cotton/PES)	★ ★ ★ ★ ★ (Ideal)	Fibre bonding	★ ★ ★ ★ ★	General apparel
Dark textiles	★ ★ ★ ★ ★ (Ideal)	Fibre bonding	★ ★ ★ ★ ★	Fashion, workwear
Fleece	★ ★ ★ ★	Fibre bonding (Dependent on surface irregularity)	★ ★ ★ ★	Outdoor garments

DTF Substrate Compatibility – Conditional Applications

Substrate	Suitability for DTF	Adhesion Mechanism	Durability	Remarks
Natural leather (*) (Uncoated)	★ ★ ★	Partial absorption + surface adhesion	★ ★ ★	Sensitive to heat, variable results
Natural leather (*) (coated/pigmented)	★ ★	Surface adhesion	★ ★	Behaves like “plastic”
Synthetic leather (PU) (*)	★ ★ ★	Surface adhesion	★ ★ ★	Good consistency, moderate durability
Nylon	★ ★	Limited bonding	★ ★	Low surface energy – Often water-repellant coating – Heat sensitive – Narrow process window
Softshell	★ ★	Reduced fibre anchoring	★ ★	Coatings may reduce adhesion

(*) Applications on synthetic leather and/or natural leather may require a dedicated TPU (Thermoplastic PolyUrethane) hot-melt adhesive powder.

DTF Substrate Compatibility – Not Suitable

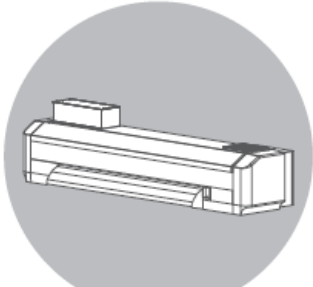
Substrate	Suitability for DTF	Reason
Glass	★	Non-porous - No adhesion
Metal	★	No mechanical anchoring
Ceramics	★	Smooth, non-porous surface
Rigid plastics (ABS, acrylic, etc.)	★	Adhesive cannot bond effectively
Coated promotional items	★	Surface too closed

XPD-924D DTF Printer

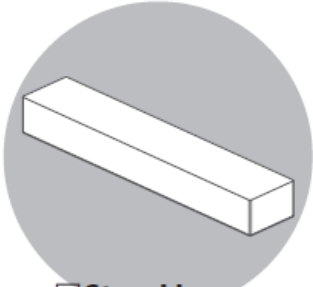
Specifications

Printing method	Drop-on-demand Micro Piezo Inkjet Technology
Number of Print Heads	2 AccuFine print heads (staggered)
Variable Head Height	4 levels: 1.5 / 2.0 / 2.5 / 4.0 mm
Media Thicknesses	0.3 / 0.8 / 1.3 / 2.8 mm
Resolutions	1200 / 900 / 600 / 300 dpi
Max print resolution	1200 x 1200 dpi
Media width	635 mm - 25"
Media Capacity	Ø 150mm - 5.9" / core 2" & 3"
Roll media	Max. 30.0 kg - 66 lbs or less
Max printable width	622.3 mm - 24.5"
Max print speed	17.5 m ² /h
RIP Software	CADlink™ Digital Factory 12

XPD-924D DTF Printer – Box Contents



□ Printer



□ Stand box



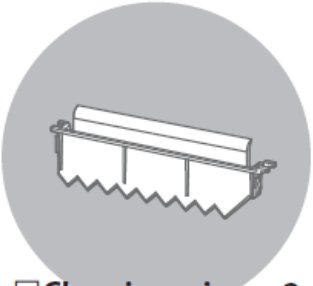
□ Startup Guide



□ Cable tie



□ Waste ink tank



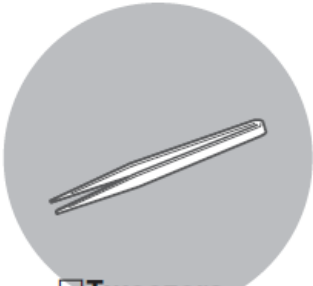
□ Cleaning wiper : 2



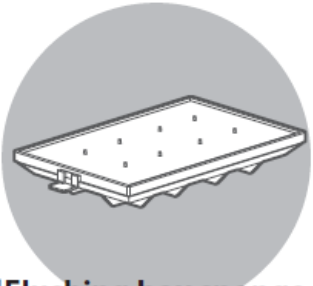
□ Cleaning stick : 10



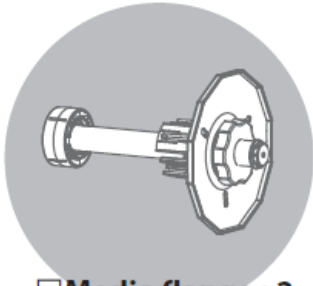
□ Paper towel : 5



□ Tweezers



□ Flushing box sponge : 5



□ Media flange : 2

Automatic S -20 TPU Adhesive Powder Shaker

Specifications

Max width	610 mm
Electrical	208 – 220 V 50 – 60 Hz 16 A
Consumption	3 kW
Powder Glue	Adhesive Low Migration TPU P-6 Powder
Glue Packs	1000 g powder glue packs
Size (W x L x H)	
Shaker	980 x 1680 x 1020 mm
Packaging	1300 x 1880 x 1100 mm
Weight	
Net	250 kg
Shipping	370 kg