



Digital Factory v11.1 Highlights

The next-gen UI puts the power to create at your fingertips with redesigned layouts, expanded options, workflow adjustments, customizable dark and light themes, and unlocks true-shape nesting in the contour cutting module – the powerful new nesting feature which uses advanced software algorithms to efficiently nest shapes.

Tool bar

Refreshed and reorganized to put the most commonly-used tools and functions at your finger-tips.

Job list title bar

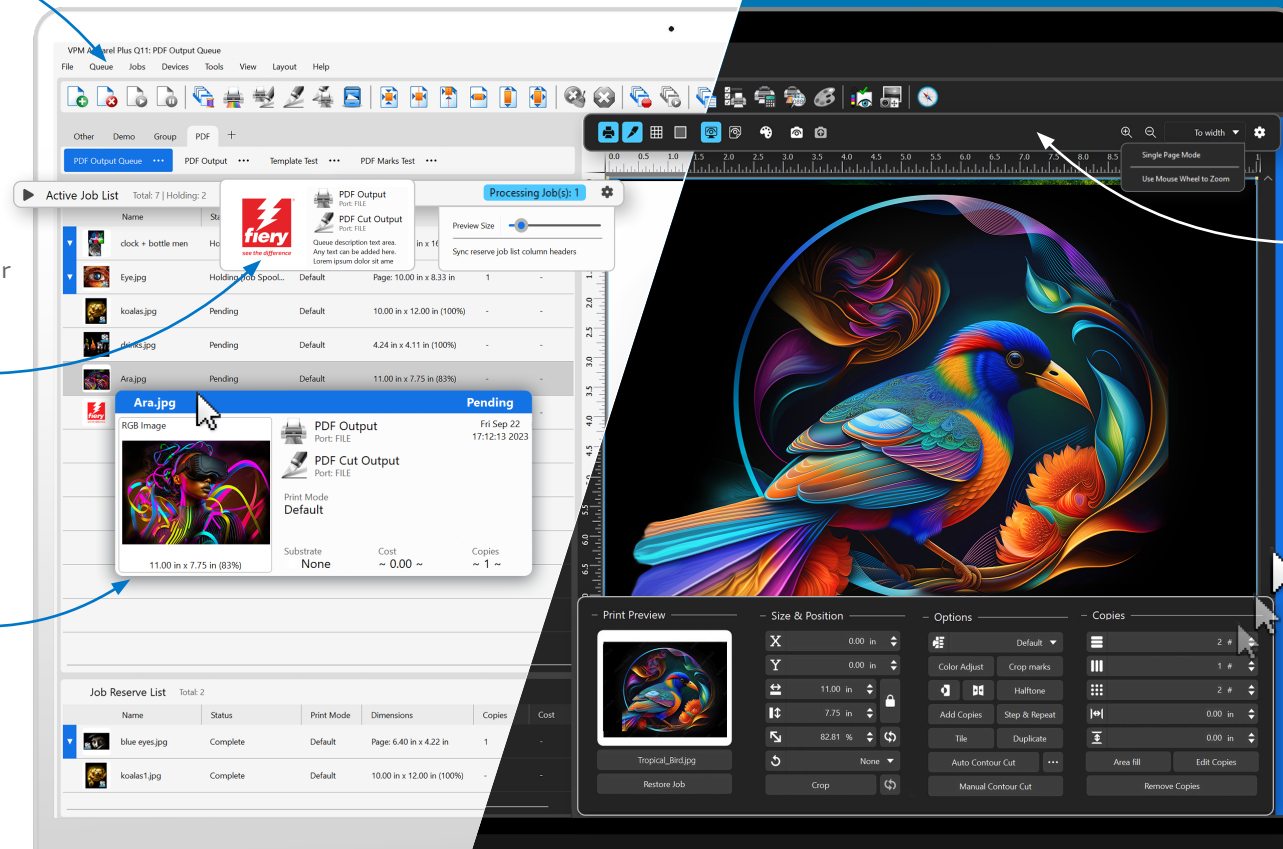
A redesigned, interactive job list offers the status of your workflow at a glance.

Queue groups

Create queue groups with a single click and add to these queues with drag and drop functionality.

Job List Info Tip

Get quick info on your highlighted job with more information displayed in a cleaner design.



Preview Control Bar

Featuring new intuitive controls for single page view mode and mouse zoom controls.

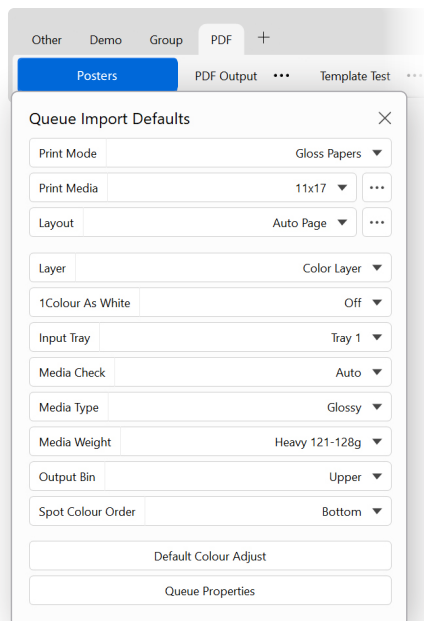
Smart Bar

An all-new design introduces new icons, simplified layouts, and more visibility for the most used controls.

The smart bar can snap vertically or horizontally.



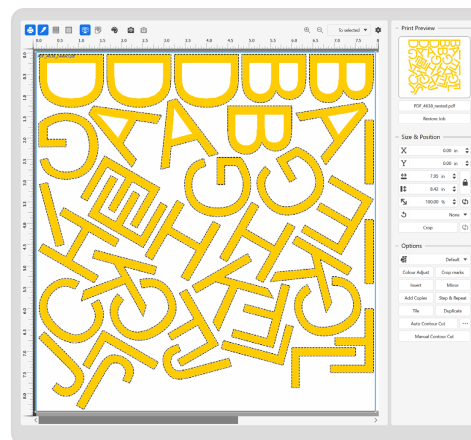
Get More From Digital Factory



Automated Queue Imports

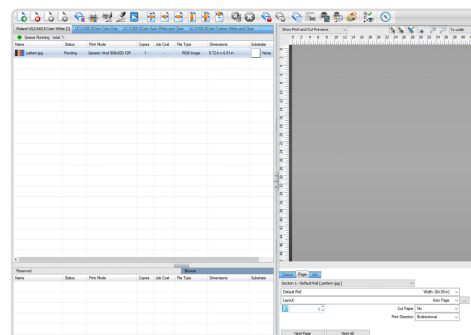
Streamlined and enhanced to bring you the controls you need in an easy to use drop down format. Simply drag your files into a pre-defined queue and have everything calibrated and ready to go to your printer.

Automated Queue Imports let you set up different queues for different substrates once, so that all new jobs will follow your settings. Spend more time producing and less time configuring.



True Shape Nesting

Version 11.1 also adds true shape nesting to the contour cutting module. With true shape nesting, objects are nested based on the design or cut line, meaning hollow spaces or gaps can be filled, saving you more on material costs.



Classic UI

While the Next-Gen UI offers multiple workflow improvements and quality of life upgrades, sometimes change can come at the wrong time. Not to worry, classic UI modes and themes are just a click away.



For more information, please visit www.fiery.com

Nothing herein should be construed as a warranty in addition to the express warranty statement provided with Fiery, LLC products and services.

ColorGuard, ColorRight, Command WorkStation, ColorWise, Fiery, the Fiery logo, Fiery Compose, Fiery Driven, the Fiery Driven logo, Fiery Edge, Fiery Essential, Fiery HyperRIP, Fiery Impose, Fiery Impress, Fiery ImageViewer, Fiery Intensify, Fiery JobExpert, Fiery JobFlow, Fiery JobMaster, Fiery Prep-it, Fiery Prints, the Fiery Prints logo, Fiery TrueBrand, FreeForm, MicroPress, IQ, PrintMe, RIPChips, RIP-While-Print, Spot-On, SpotPro, and WebTools are trademarks or registered trademarks of Fiery, LLC and/or its wholly owned subsidiaries in the U.S. and/or certain other countries. All other terms and product names may be trademarks or registered trademarks of their respective owners and are hereby acknowledged.

© 2023 FIERY, LLC. ALL RIGHTS RESERVED.

2023_10_03